















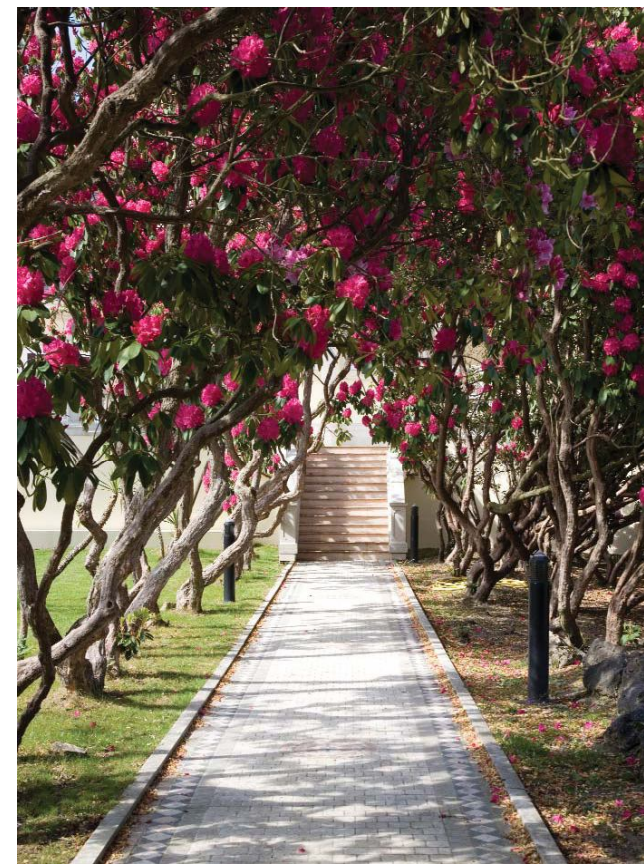


## *Description*

Standing in approximately 58 acres, Updown Court was conceived and planned as a spectacular mansion of unparalleled scale and luxury. The house extends to just under 4,500 sq m (50,000 sq ft) and has accommodation arranged over 4 floors. The house stands in a slightly elevated position with south facing views over the formal gardens and a lake which are framed by mature woodland to offer extensive privacy. Elsewhere in the grounds there is a security lodge adjacent to the magnificent entrance gates, two exceptional staff/guest houses and an estate office adjoining the garage complex. Beyond this is a stable block set close by wrought iron gates which allows for access to secluded bridleways. The house benefits from extensive wooded gardens and grounds within which are two swimming pools and an all weather sports surface. Updown Court has extensive security provision.









# *The Approach*

The property is approached through large ornamental wrought iron gates mounted on high stone piers with further piers and splays to each side. The drive descends towards the house and is guarded by low brick walls. The drive then splits into three directions. To the right, it descends to the underground parking and to the centre it widens under the porte-cochère into a large turning area with marble paving. The third element continues round to the staff/guest accommodation, manager's area and secondary garaging.







## *Luxury Accommodation*

Updown Court includes the main house, built on a palatial scale over four floors; a security lodge, two staff/guest houses, comprising nine bedroom/bathroom suites in total and a separate manager's office. There is underground garaging for at least eight cars and a helipad for private landings.





# Main House

The main house has been organised on a scale to allow for ambassadorial entertaining as well as conventional private family living. On the ground floor, there is a triple height reception area with marble flooring and French doors leading onto an extensive terrace overlooking the gardens.

The Ground Floor, surrounded by wide marble terraces providing access to the gardens, incorporates a grand hallway, a sunken reception area, as well as bar and dining areas.

The East Wing holds the Master-bedroom Suite consisting of a sitting area, bedroom and bathroom, a limed oak corridor between the bedroom and the bathroom, direct access to the East Wing pool balcony and the glass lift to the pool area. There are two powder rooms, conference room and library/reading room.

The West Wing, at ground floor level, includes a cherry panelled office, open plan breakfast room and kitchen, private sitting room, two further powder rooms and the banqueting hall. There is also access to the West Wing pool, designed on a Roman theme with marble pillars and which provides a beauty salon, sauna and male and female dressing rooms.

The First Floor incorporates eight bedroom/bathroom suites. Each is individually designed with balcony access.











The Penthouse floor is divided into two suites, each comprising of two bedrooms, a bathroom, a shower room and a powder room, dressing room and a walk through sitting/dining room. There is a terrace with infinity pool and central leisure/reception area. There are also a further three balconies/terraces, including the large terrace over the port-cochère.

The Basement of the property includes an underground garage, which can hold up to eight luxury cars, various store rooms and the industrial kitchen with areas reserved for cold rooms, freezer rooms and a wash room. A corridor leading from the garage accesses a glass lobby which leads into the bowling alley and the gymnasium area. Close by are the male and female changing rooms, the cinema and the wine cellar. There is also a walk in strong room/safe, a billiard/snooker area and a squash court.

The principal lift has been designed to service all floors and there is separate lift to connect the industrial kitchen with the breakfast room.

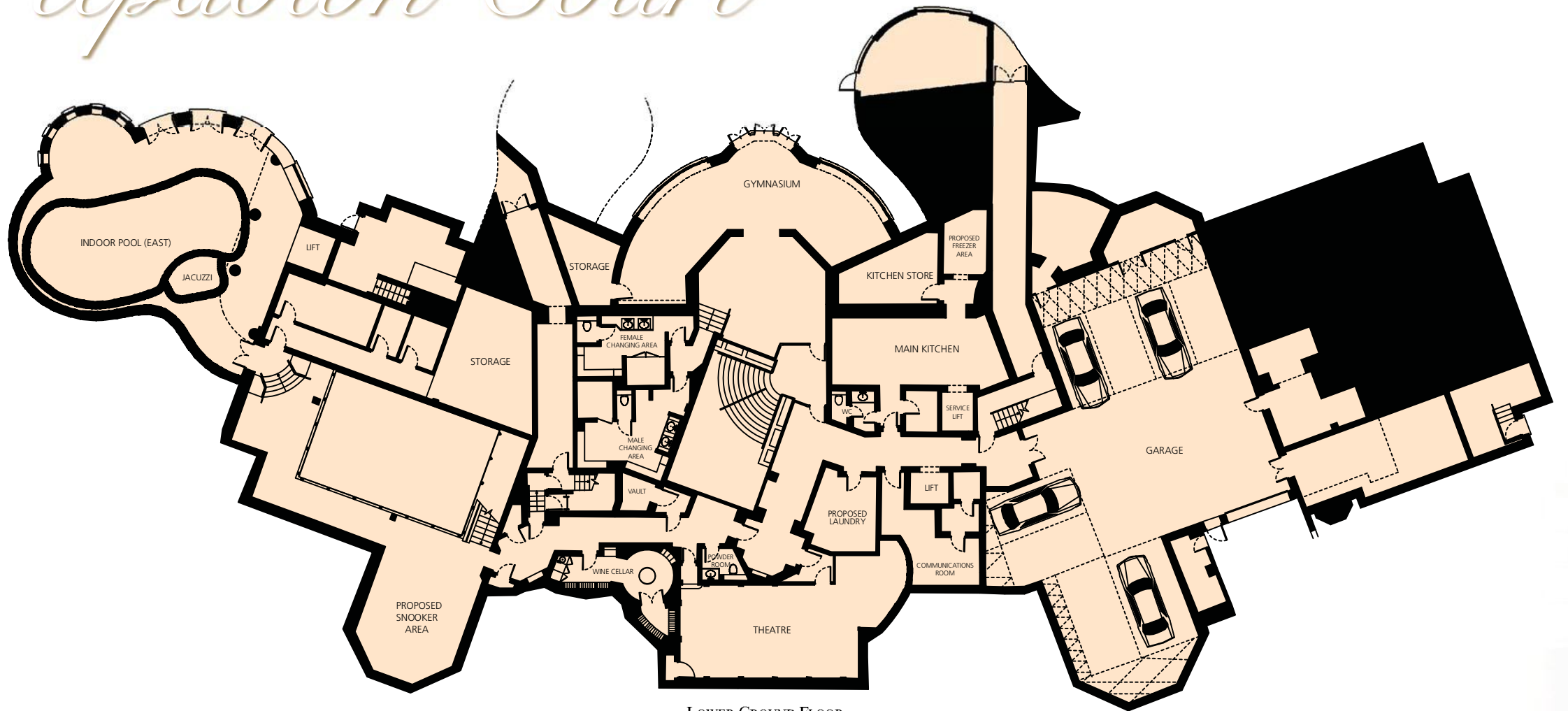




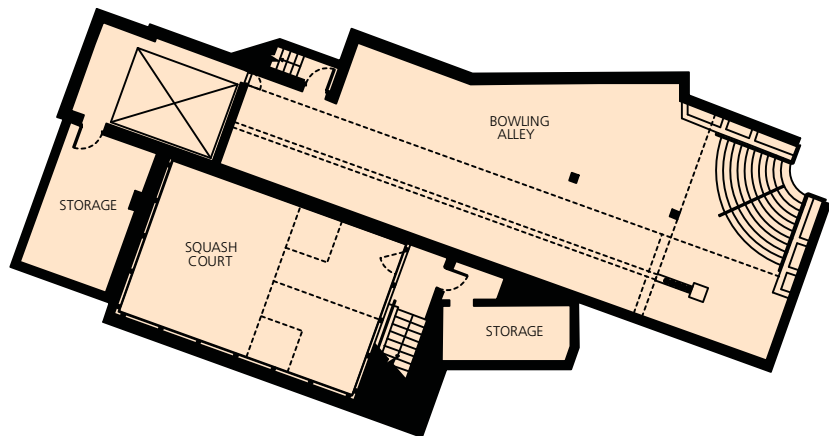




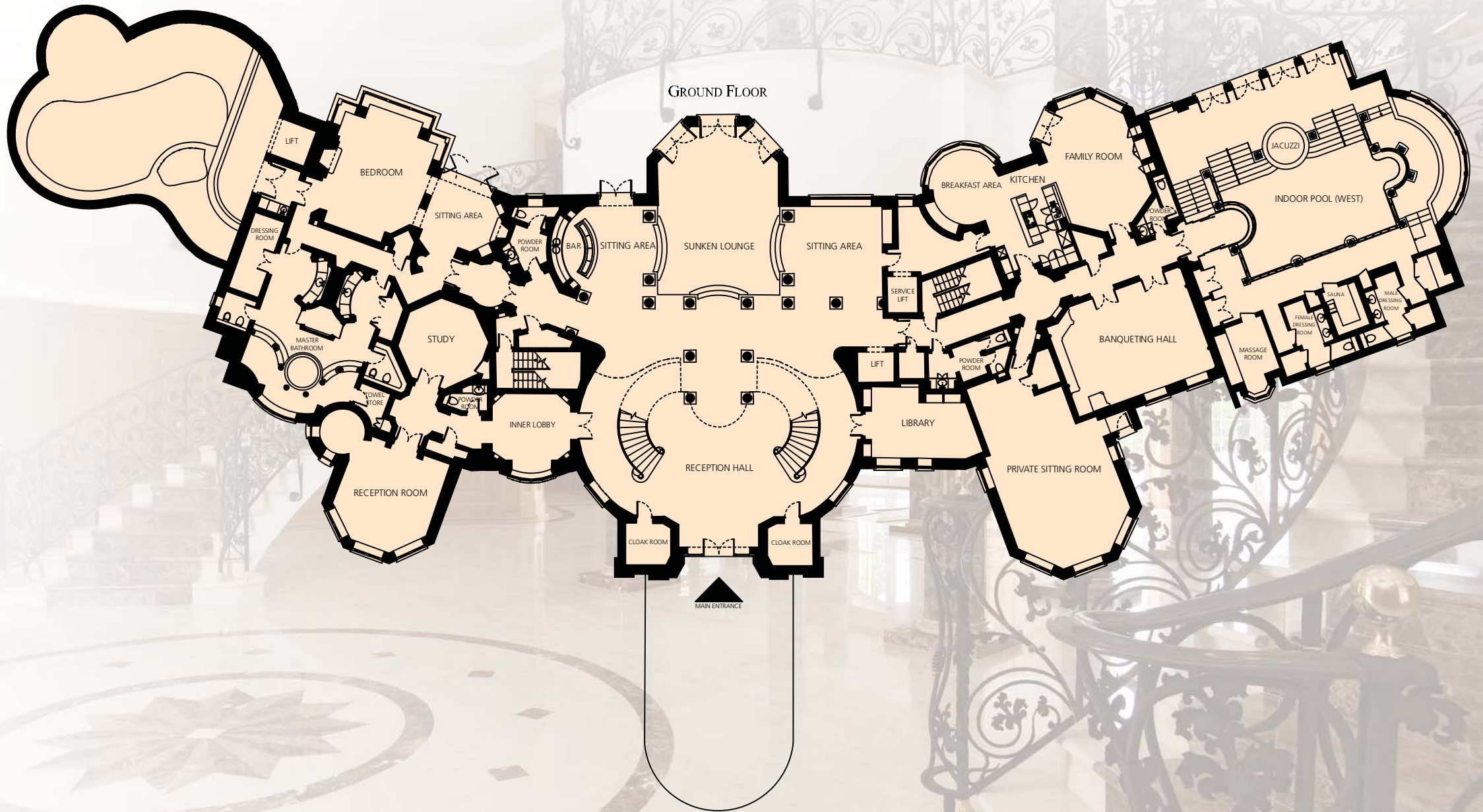
# Updown Court



LOWER GROUND FLOOR







GROUND FLOOR

LIFT

BEDROOM

SITTING AREA

POWDER ROOM

BAR

SITTING AREA

SUNKEN LOUNGE

SITTING AREA

SERVICE LIFT

BREAKFAST AREA

KITCHEN

FAMILY ROOM

JACUZZI

INDOOR POOL (WEST)

DRESSING ROOM

MASTER BATHROOM

STUDY

INNER LOBBY

RECEPTION HALL

LIBRARY

LIFT

POWDER ROOM

BANQUETING HALL

MASSAGE ROOM

SALAHA

FEMALE DRESSING ROOM

MALE DRESSING ROOM

RECEPTION ROOM

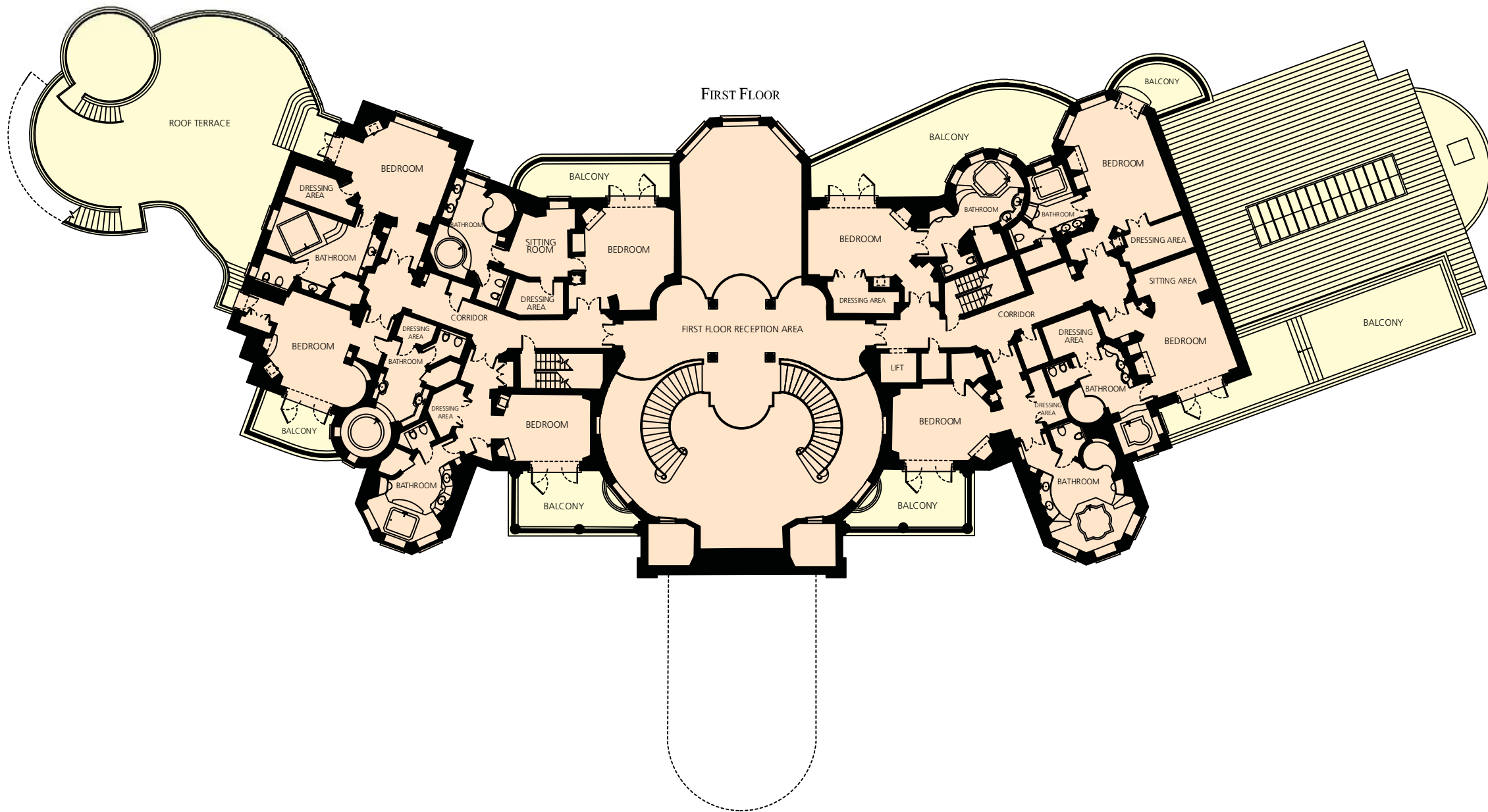
CLOAK ROOM

CLOAK ROOM

PRIVATE SITTING ROOM

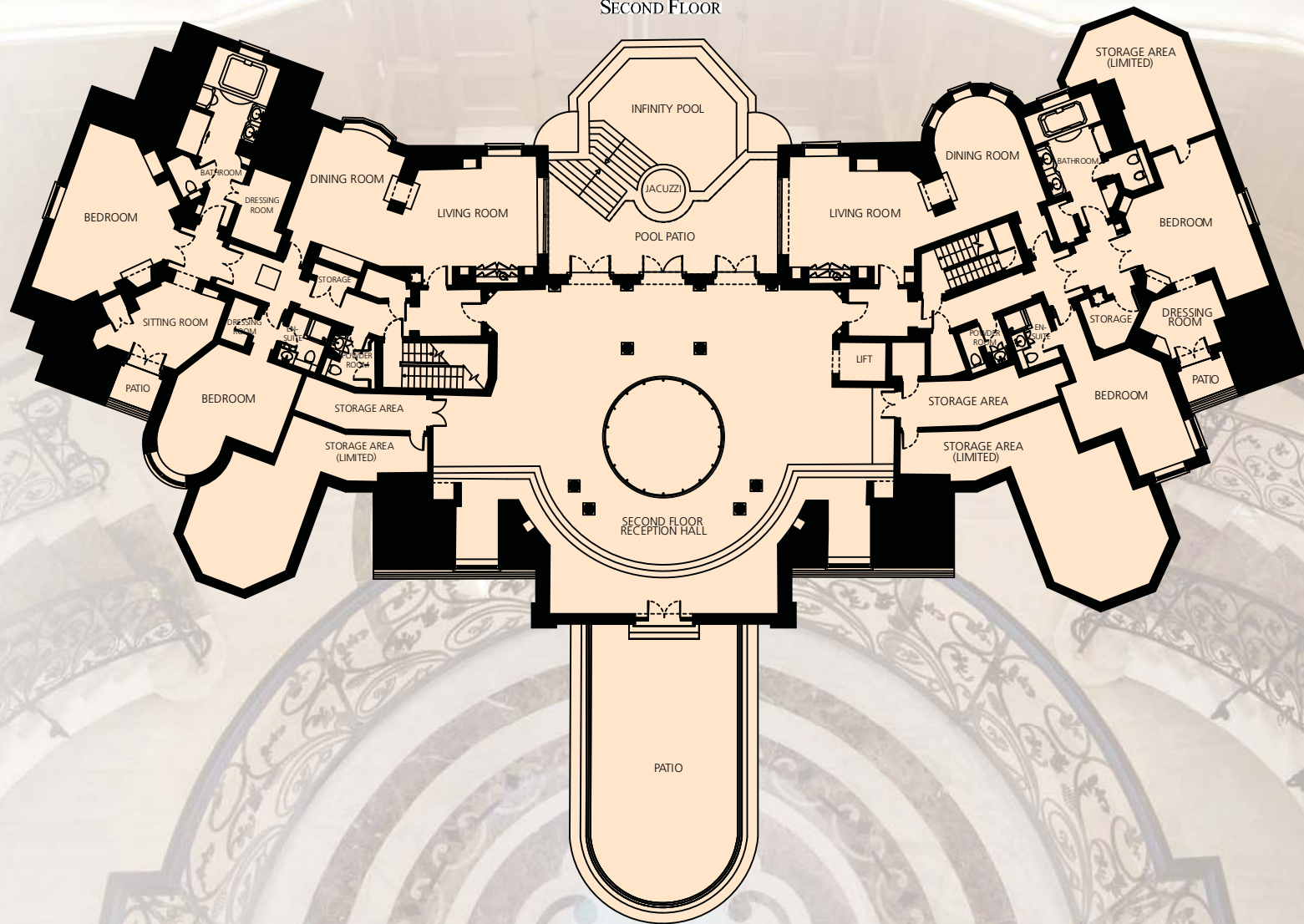


# Updown Court



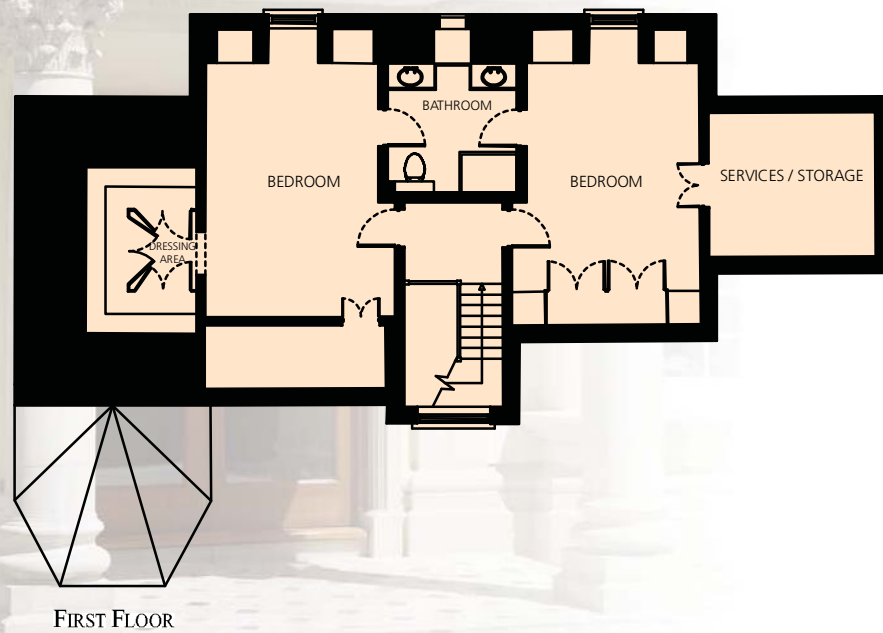
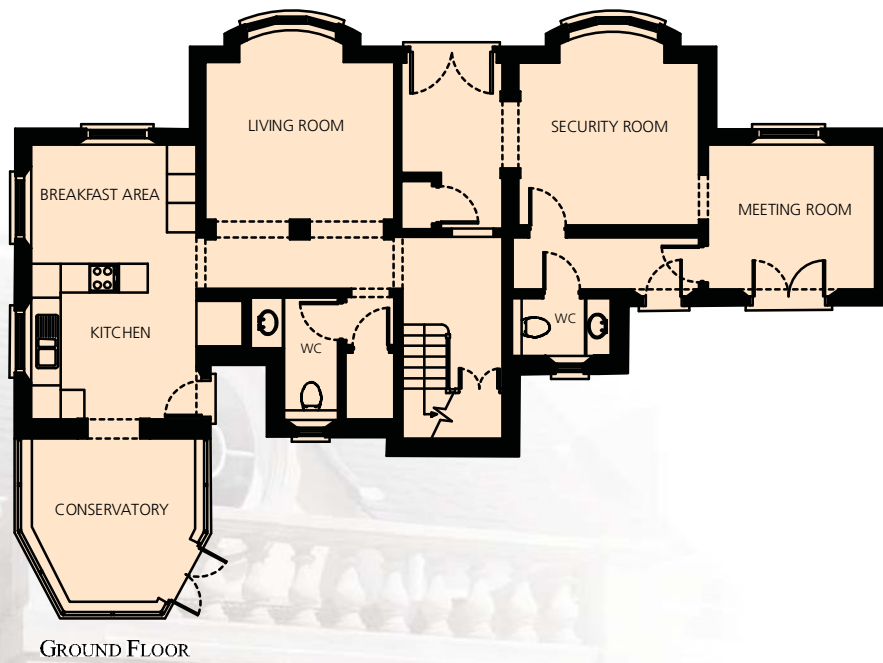


SECOND FLOOR





## GATE HOUSE



## Gatehouse

The gatehouse incorporates two bedrooms, a conservatory, a kitchen/breakfast room, a sitting room, two separate powder rooms, a security room and a waiting area.

There are also two pool houses on the estate, one by each of the outside pools.

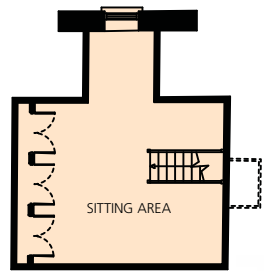


## Estate Manager's Office

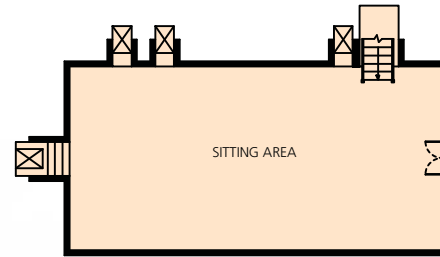
Attached to the three bedroom guest accommodation building is the block providing further garaging for four vehicles, the laundry and the estate manager's office with ensuite facilities.







FIRST FLOOR



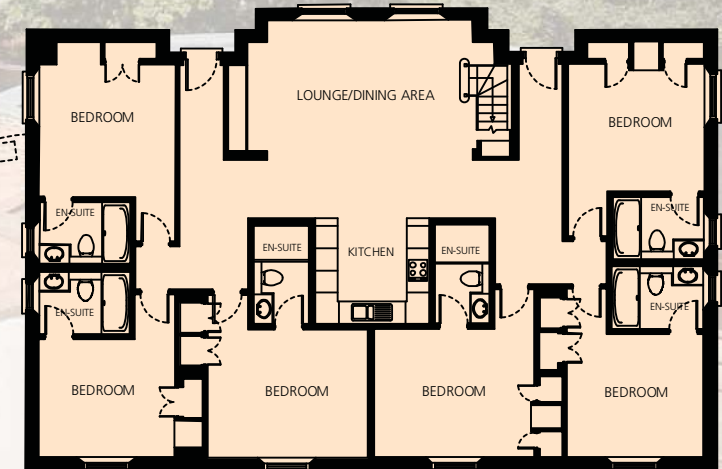
FIRST FLOOR

# Staff Accommodation

There are two separate guest properties. One consists of six bedrooms with en-suite bathrooms, a kitchen/dining area and an upstairs sitting room. The other includes three bedrooms with en-suite bathrooms, a kitchen/dining area and upstairs sitting room.



GROUND FLOOR



GROUND FLOOR







# *Gardens and Grounds*

The property sits in over 11 acres of landscaped gardens and 46 acres of mature private woodland featuring broadleaf and evergreen trees.

Carefully divided into different areas to appeal to all tastes, it includes formal gardens, a dramatic lake with 10 metre fountain, formal lawns and several ponds. Pathways lead through the gardens and run alongside an ornamental stream.









